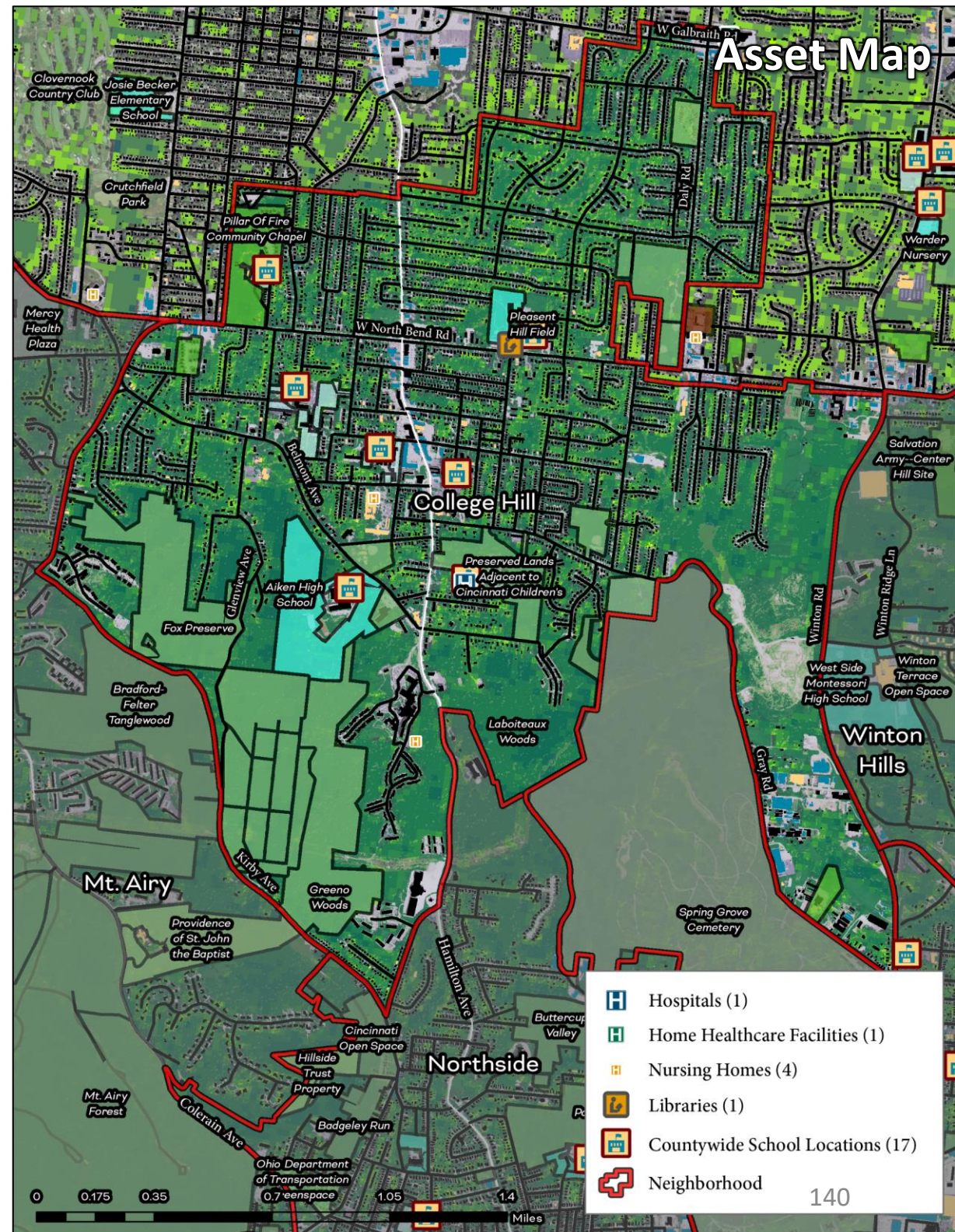


# College Hill

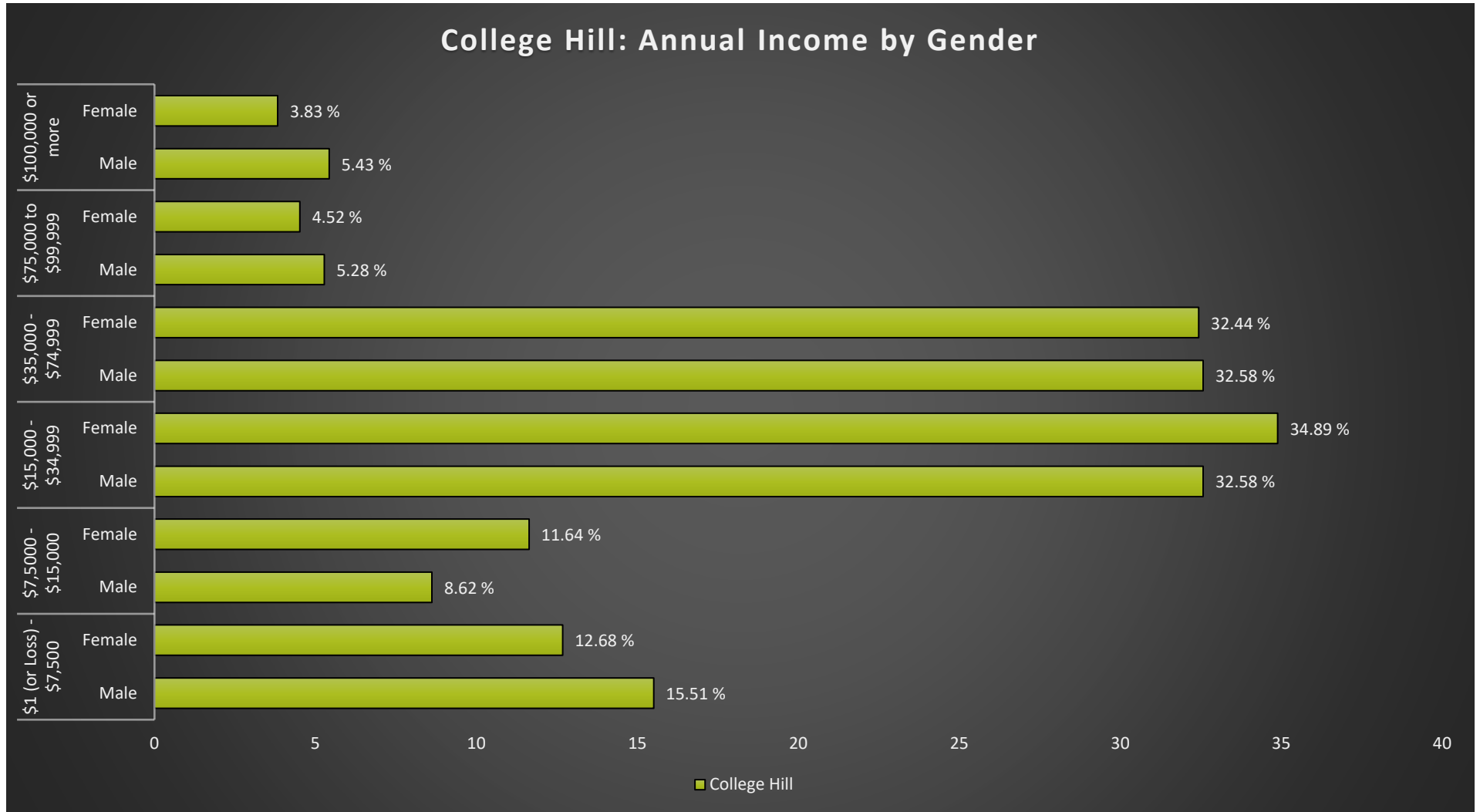
## Cincinnati Neighborhood Profile

College Hill is a predominantly Black neighborhood (62.7%) with around ~16,150 residents. It has active community councils (College Hill Community Council), a community development corporation (College Hill Urban Redevelopment Council), and the College Hill Neighborhood Business District Urban Renewal Plan. The average life expectancy for the neighborhood is 74.8 (ranking 18th of all communities assessed). College Hill has a relatively average prevalence of diabetes (15.8%), kidney disease (3.6%), and heart disease (15.8%) of all communities assessed, but “high” levels of cancer (6.8%). The neighborhood has ~33.7% tree canopy cover (ranked 13th of all communities assessed), and is ranked 14th of all communities assessed for percent of land in parks and greenspaces (19.5%). College Hill has “low to excellent” access to public transit and “below average” walkability. It has “low” exposure to air toxins that cause cancers and respiratory hazards, “moderate” exposure to traffic and potential lead paint, and “very high” exposure to PM2.5 levels and ozone concentrations. In addition, it has “moderate” exposure to potentially toxic industrial sites and hazardous waste treatment and disposal sites, but “very high” exposure to Superfund sites. College Hill ranks 16th of all communities assessed for persons living in poverty (18.2%) and 17th for number of SNAP recipient households (14.7%).



# College Hill

## Cincinnati Neighborhood Profile



College Hill Notable Indicators		
Average Life Expectancy	Exposure to National Priority List Sites	% of Residents Living in Poverty
74.8 (ranked 18th for all communities assessed)	Very High	18.2% (ranked 16th highest for all communities assessed)



# College Hill

## Cincinnati Neighborhood Profile

People			
Indicator	Rank	%	# of Persons
Population	-	-	16,139
Persons over 65	42	17.5%	2,823
Persons 17 and Under	26	23.0%	3,704
Children Living w/ Grandparents	31	1.7%	268
Race/Ethnicity:			
Black	-	62.7%	10,122
white	-	32.9%	5,307
Asian	-	0.4%	72
Other	-	4.0%	638
Latinx	-	1.6%	265
Persons 5 and Older in Households w/ Limited English Ability	22	0.3%	50

Health			
Indicator	Rank	Value	
Life Expectancy	18	74.8 years	-
Disease Prevalence Estimates:	Rank of % w/Condition	% with Condition	Persons with Condition
Asthma	17	10.6%	1,710
Cancer	43	6.8%	1,098
Diabetes	28	15.8%	2,556
Heart Disease	28	8.1%	1,303
High Blood Pressure	32	39.7%	6,415
Kidney Disease	28	3.6%	578
Obesity	19	36.9%	5,951
Lack of Health Insurance	18	10.2%	1,646
Persons w/ Independent Living Difficulty	20	2.5%	404
Persons Living w/ Disability	19	12.4%	2,005

Ecosystems and Infrastructure		
Indicator	Rank	Value
Tree Canopy Coverage	13	33.7%
Greenness of Land Surface	7	69.6%
Percent Land in Parks and Greenspaces	14	19.5%
Impervious Surface	11	23%
Heat Island Exposure	16	0.28
Walkability	-	Below Average to Most Walkable
Persons w/ Low-Income and Low Food Access	21	21.3%
Transit Accessibility	-	Low to Excellent
Daytime Population vs. Resident Population	11	51.2%
Commuters Leaving Each Day	-	7,531
Commuters Using Public Transit	27	9.2%

# College Hill

## Cincinnati Neighborhood Profile

Socio-Economic Indicators			
Indicator	Rank	%	#
Persons Living in Poverty	16	18.2%	2,936
SNAP Recipient Households	17	14.7%	1,057
Educational Attainment:			
Less than High School	-	5.9%	-
HS or Equivalent	-	21.0%	-
Some College	-	15.4%	-
Associate's Degree	-	6.3%	-
Bachelor's Degree or Higher	-	19.3%	-
Educational Attainment Index	20	0.43	-
Extreme Housing Burdens:			
Renter-Occupied Housing (as % of All Housing Units)	7	42.9%	3,087
Renters Spending 30% of Income or More on Rent + Utilities	12	20.3%	1,464
Renters Spending 50% of Income or More on Rent + Utilities	15	9.6%	692
Homeowners Spending 30% of Income or More on Mortgage + Utilities	30	20.7%	853
Average Energy Costs (as % of Income)	15	3.5%	-
Persons without Vehicle Access	18	6.8%	1,090

Built Environmental Hazards		
Indicator	Relative Exposure Level	Value
Traffic Exposure	Moderate	-
Potential Lead Paint Exposure (Houses Built pre-1960)	Moderate	58.55%
Cancer Risk from Air Pollution	Low	-
Respiratory Disease Risk from Air Pollution	Low	-
Proximity to Water Pollution Sources	Low	-
PM2.5 Levels in Air, µg/m3	Very High	9.81
Ozone Concentration, ppb	Very High	46.73
Diesel Particulate in Air, µg/m3	Low	0.64
Proximity to Superfund Sites	Very High	-
Proximity to Potentially Toxic Industrial Activity	Moderate	-
Proximity to Hazardous Waste Treatment and Disposal Facilities	Moderate	-

Neighborhood Planning	
Indicator	Description
Community Councils	College Hill Community Council
Community Development Corporations	College Hill Urban Redevelopment Council (CHURC)
Community Plans	College Hill Neighborhood Business District Urban Renewal Plan (2002)